



## Purifying bacillus subtilis protease: A Step closer to Commercialization

Vishal Chandra<sup>1</sup>, Haldher Dubey<sup>1</sup>, Pramod Yadav<sup>1,2\*</sup>,

<sup>1</sup>School of Life Sciences and Biotechnology, Chhatrapati Shahu Ji Maharaj University Kanpur, Uttar Pradesh, India.

<sup>2</sup>Amity Institute of Neuropsychology and Neurosciences, Amity University Uttar Pradesh, India.

### Article Info

**Received:** May 11, 2025

**Accepted:** May 28, 2025

**Published:** June 04, 2025

**\*Corresponding author:** Pramod Yadav, Department of AFAF, Amity University Uttar Pradesh, Noida Campus, 201313, India.

**Citation:** Yadav P, Chandra V, Dubey H, (2025). "Purifying Bacillus Subtilis Protease: A Step Closer to Commercialization". Journal of International Research and Reviews, 1(2); DOI: /JIIR/006

**Copyright:** © 2025 Pramod Yadav. This is an open access article distributed under the Creative Commons Attribution License, which permits unrestricted use, distribution, and reproduction in any medium, provided the original work is properly cited.

### Abstract:

This study reports the isolation and characterization of a novel protease-producing strain of *Bacillus subtilis*. The isolate, designated as GS-P40, exhibited the highest protease activity among six proteolytic bacterial isolates screened on skim milk agar plates. Morphological and biochemical features confirmed the identity of GS-P40 as *B. subtilis*. Protease production and activity were optimal at pH 7.4, temperature 60°C, and fermentation time 48 h. The crude protease concentration was 0.14 µM with a specific activity of 0.0233 U/ml. The crude protease also improved the washing performance of a commercial detergent, indicating its potential as a biotechnological agent. This paper presents the isolation and characterization of a novel protease-producing *B. subtilis* strain and its potential application in the detergent industry.

**Keywords:** Protease; Enzyme isolation; Enzyme characterization; Fermentation; Biotechnology

### 1. Introduction:

The isolation of pure cultures of microorganisms from environmental or host-associated samples is essential for identification purposes. This technique has a long history in bacteriology and parasitology and later in virology, with continuous improvements in automation, technology, speed, and accuracy [1,2]. A gram-positive, motile, and endospore-forming microorganism, *Bacillus subtilis* is widely distributed in nature. It synthesizes and releases different types of antibiotics, including polymyxin, diffcadin, subtilin, and mycobacillin, as part of its sporulation process. The biosynthesis and secretion of these antibiotics are mediated by five single peptidase genes in *B. subtilis* [3]. *Bacillus* spp. are industrially relevant for the production of alkaline proteases, which are enzymes that hydrolyse peptide bonds in proteins under alkaline conditions. Among the commercially available alkaline proteases, those derived from *Bacillus* spp., such as *B. cereus*, *B. stercorarius*, *B. mojavensis*, and *B. subtilis*, are widely used [3,4]. Alkaline proteases account for a large share (59%) of the global industrial enzyme market, which was valued at over \$5.9 billion in 2023 [5]. These enzymes have applications in various sectors, such as detergents, leather, food, and pharmaceuticals. Microorganisms are preferred sources of proteases due to their fast growth rate, low cultivation space requirement, and genetic manipulability, which enable the production of tailor-made enzymes for specific purposes [5]. To identify bacterial isolates, 16S rDNA sequence analysis was performed. DNA was extracted from single colonies by alkaline lysis and stored at -20°C until further use. The 16S rDNA region was amplified and sequenced using specific primers, and the sequences were edited using Chromas LITE (version 2.01) and compared with GenBank entries using BLAST to determine the closest matches. A neighbor-joining phylogenetic tree was constructed based on

the 16S rDNA sequences using Clustal W. Polymerase chain reaction (PCR) is a method for in vitro DNA amplification that uses two oligonucleotide primers that anneal to opposite strands of the target DNA fragment and serve as templates for DNA synthesis by a polymerase. This study isolated and characterized a protease-producing *B. subtilis* strain from soil samples using biochemical and molecular methods. It also evaluated the enzymatic activity and stability of the protease under different conditions and compared it with commercially available proteases. The results suggest that the isolated *B. subtilis* strain is a potential source of alkaline protease for industrial applications.

## 2. Review of literature:

Novel antimicrobial agents are needed to combat emerging antibiotic-resistant pathogens in human, animal, and plant diseases. Marine bacteria are a potential source of such compounds, as they produce antibacterial substances. Antimicrobial substances from microorganisms in sea water have been identified, such as bacitracin from *Vibrio harveyi*, named harveyicin. Bacteria exhibit a remarkable defense mechanism by producing bacteriocins, ribosomally synthesized peptides with bactericidal activity [6]. Various gram-negative and gram-positive bacteria produce bacteriocins, with lactic acid bacteria (LAB) being the most promising producers [7]. LAB bacteriocins are generally recognized as safe (GRAS) and exhibit antibacterial activity against food-borne pathogens and spoilage bacteria, making them attractive for food biopreservation [8,9]. The main classification scheme for LAB bacteriocins is based on the mode of action and activity spectrum. Lantibiotics are a group of class I bacteriocins that are characterized by their small size, membrane activity, heat stability, and presence of uncommon thioether amino acids. Class II bacteriocins share the same features except for the modification of their amino acids, and they are further classified into three subclasses based on their structure and function [10]: Class IIa, Class IIb, and Class IIc. Class IIa bacteriocins are characterized by a conserved motif at their N-terminal ends and exhibit activity against *Listeria*. Class IIb bacteriocins are composed of two distinct peptides that need to interact for optimal activity. Class IIc bacteriocins are secreted by the sec-system and depend on it for their function [10]. Class III bacteriocins are large proteins that are heat-sensitive and exported by the bacterial preprotein translocase (sec-pathway) [11]. Class IV includes circular bacteriocins that are covalently linked head to tail [9,12]. LAB bacteriocins are currently authorized for use as food preservatives, with nisin being the most well-known and studied [9]. Bacteriocins have been isolated from various *Bacillus* species. A bacteriocin-like inhibitory substance (BLIS) producer, *Bacillus licheniformis* exhibits a wide range of antimicrobial activity against harmful and deteriorating bacteria. *Bacillus subtilis* strains produce antibacterial and antifungal compounds such as subtilin and ericins. *Bacillus cereus* produces cereins active against other *B. cereus* strains [11,13]. *Bacillus amyloliquefaciens* produces BLIS active against *E. coli* and *Clostridium perfringens*. Other *Bacillus* species such as *B. polymyxa*, *B. megaterium*, *B. mycoides*, and *B. pumilus* also produce bacteriocins. In addition to bacteria, some of

the BLIS synthesized by *Bacillus* species exhibit antimicrobial activity against fungi. *B. licheniformis*, *B. brevis*, and *B. amyloliquefaciens* produce BLIS with broad-spectrum antagonistic activity against various bacteria and fungi [13].

**Table 1:** *Bacillus* species and their bacteriocin production.

Species	Source	Antimicrobial Activity	Bacteriocin	References
<i>Bacillus subtilis</i>	Soil, water	Yes	Subtilin and Ericins	[14]
<i>Bacillus licheniformis</i>	Soil, feathers, food	Yes	Bacteriocin like inhibitory substances	[15]
<i>Bacillus amyloliquefaciens</i>	Soil, water, plants	Yes	Bacteriocin like inhibitory substances	[16]
<i>Bacillus pumilus</i>	Soil, water	Yes	Bacteriocin	[11]
<i>Paenibacillus sp.</i>	Soil, water	Yes	Bacteriocin	[9]

## 3. Materials and methods:

Soil samples were collected from the garden of the IBSBT department at Chatrapati Sahu Ji Maharaj University, Kanpur, India, at a depth of 4-6 cm and stored in sterile plastic bags with date and time labels. The aim of this study was to isolate and identify a bacterial strain capable of hydrolyzing casein, the main protein in milk. Casein hydrolysis is an important process in the dairy industry, as it affects the quality and texture of cheese and other dairy products. The following methods were used to isolate and identify the bacterial strain [17,18]. Serial dilutions ( $10^{-1}$  to  $10^{-6}$ ) of the soil samples were prepared and spread on skim milk agar plates (1%). After incubating the plates at 37°C for 48 hours, the hydrolysis zone around each colony was measured [19]. The colony with the largest zone of hydrolysis was selected and subcultured on nutrient agar plates for further identification. Morphological and biochemical tests were performed to characterize the bacterial isolate. Additionally, molecular identification was carried out using two methods: 16S rRNA gene sequencing and polymerase chain reaction (PCR).

### 3.1. Morphological and biochemical tests

#### 3.1.1. Gram staining test:

The morphological features of the bacterial isolate were observed using a light microscope after Gram staining. Gram staining is used to distinguish bacteria based on their cell wall configuration. Gram (+ve) bacteria possess a thick peptidoglycan layer that holds the crystal violet (primary stain), whereas gram (-ve) bacteria have a thin layer of peptidoglycan [20]. A heat-fixed smear of the bacterial culture was prepared on a glass slide. The slides were stained with primary stain for one minute, washed with tap water,

treated with primary stain fixation (Gram's iodine) for one minute to form a complex with the primary stain, decolorized with ethyl alcohol for about three seconds, again washed with tap water, stain with counterstained (safranin) for one minute, and observed under oil light microscope [21,22].

### 3.1.2. *Catalase test:*

The bacterial isolate was subjected to catalase and gelatine hydrolysis tests. The catalase test detects the presence of catalase enzyme in bacteria, which decomposes  $\text{H}_2\text{O}_2$  into  $\text{H}_2\text{O}$  and  $\text{O}_2$ . This test was performed using the following protocol: a loopful of the bacterial isolate was smeared on a glass slide and overlaid with 3% hydrogen peroxide solution. The formation of oxygen bubbles within one minute specified a (+ve) catalase reaction, while the lack of bubbles showed a (-ve) catalase reaction [23,24].

### 3.1.3. *Gelatine hydrolysis test:*

The gelatin hydrolysis test evaluates the production of gelatinase, an enzyme that cleaves gelatin into amino acids, by bacteria. Gelatine is a protein derived from collagen, which is found in animal connective tissues. The procedure for gelatine hydrolysis test was as follows: the gelatine medium (consisting of 0.5% peptone, 2% gelatine, 0.3% beef extract, 0.5% sodium chloride, and pH 7.2) was melted in a water bath, cooled to 45-50°C, and dispensed into four sterile test tubes, allowing it to solidify. The nutrient gelatine tubes were then labelled with the names of the bacterial isolates to be inoculated [25]. A stab inoculation was performed from each culture into an appropriately labelled deep tube of nutrient gelatine, while an uninoculated deep tube served as the control. The inoculated and control tubes were incubated at 37°C for 4-7 days. Then, the tubes were refrigerated at 4°C for 15 minutes to induce gelatin solidification. The tubes were then observed for liquefaction or solidification of gelatine [25,26].

### 3.1.4. *MRVP test:*

The MRVP (methyl red and Voges-Proskauer) test is a differential test that distinguishes enteric bacteria based on their metabolic products from glucose fermentation. The test comprises two components: the MR and the VP tests. The MR test finds mixed acid fermentation, which reduces the medium's pH. The VP test detects acetoin production, a precursor of 2,3-butanediol [27]. Typically, bacteria that produce mixed acids are MR positive and VP negative (MR +ve, VP -ve), while bacteria that produce 2,3-butanediol are MR negative and VP positive (MR -ve, VP +ve). To perform the MRVP test, 5 ml of MRVP broth (containing 0.7% peptone, 0.5% glucose, and 0.5% potassium phosphate) was inoculated with *Bacillus subtilis* and sterilized by autoclaving at 121°C for 15 minutes. A control tube with uninoculated broth was also prepared. The inoculated and control tubes were incubated at 35°C for 48 hours. After incubation, the tubes were divided into two equal parts for the MR and VP tests. For the MR test, five drops of methyl red indicator (pH 4.4) were added to one part of the inoculated tube and the control tube [28]. The tubes were gently

agitated and the color change was noted. A red color signified a positive MR test ( $\text{pH} \leq 4.4$ ), whereas a yellow or orange color signified a negative MR test ( $\text{pH} > 6$ ). For the VP test, 12 drops of VP reagents A (5%  $\alpha$ -naphthol) and B (40% KOH) were added to the other part of the inoculated tube and the control tube. The tubes were gently shaken for 30 seconds with the caps off to aerate the medium. The tubes were then left undisturbed for 15-30 minutes and observed for color change. A red or pink color in the upper part of the medium signified a positive VP test, whereas no color change or a copper color signified a negative VP test [25].

### 3.1.5. *Citrate utilization test:*

The citrate utilization test assesses the bacterial capacity to consume citrate as only  $\text{C}_2$  source and ammonium salts (such ammonium chloride) as only  $\text{N}_2$  source. This ability depends on the presence of citrate permease, an enzyme that transports citrate into the cell, and citrase, an enzyme that cleaves citrate into oxaloacetate and acetate [29]. Oxaloacetate is then converted to pyruvate and  $\text{CO}_2$  by various enzymes, while acetate is converted to acetyl-CoA and then to  $\text{CO}_2$  and  $\text{H}_2\text{O}$  by the tricarboxylic acid cycle. The utilization of citrate and ammonium salts results in the production of ammonia and sodium carbonate, which raise the pH of the medium. The citrate utilization test is performed by streaking the bacterial isolate on Simmons' citrate agar slants [30]. Simmons' citrate agar comprises sodium citrate, the only carbon source, ammonium dihydrogen phosphate, the only nitrogen source, sodium chloride, magnesium sulfate, agar, and bromothymol blue as a pH indicator. The medium has an initial pH of 6.9 and is green in color. The slants were incubated at 37°C for 4-7 days. Growth and a blue color change of the medium ( $\text{pH} > 7.6$ ) signified a positive citrate utilization test. A negative citrate utilization test is indicated by no growth and no color change of the medium (pH below 7.6) [31].

## 3.2. *Molecular identification:*

To confirm the identity of the bacterial isolate, molecular methods were employed, including 16S rRNA gene sequencing and polymerase chain reaction (PCR). These methods rely on the amplification and analysis of specific DNA regions that are conserved or variable among different bacterial taxa.

### 3.2.1. *Genomic DNA extraction:*

The bacterial isolate was cultured in nutrient broth at room temperature overnight with shaking. The cells were centrifuged (RPM 10000 and three minutes) and supernatants were discarded while pellets were resuspended in 500  $\mu\text{l}$  of 1X TE buffer which are consist of 1 mM EDTA, 10 mM Tris-HCl, pH 8.0). To lyse the cells, 50  $\mu\text{l}$  SDS (10%) and 5  $\mu\text{l}$  proteinase K in concentration of (20 mg/ml) were put in and mixed thoroughly. The lysate was incubated at 37°C for 2 h to digest RNase and any residual RNA [32]. The genomic DNA was extracted with chloroform:isoamyl alcohol (24:1) in a 1:1 ratio and centrifuged (RPM 10000 and five minutes) followed by vortexing. The DNA-containing supernatants

were moved to a new centrifuge tube and the extraction was repeated until no interphase was observed. By putting the sodium acetate (3M and pH 5.2) at 1/10 volume, the DNA was precipitated and isopropanol at 0.5 volume, followed by gentle inversion until a white precipitate formed. Then, DNA was centrifuged (RPM 10000 and five minutes) and the pelleted was cleaned with ethanol (70%). Further, the DNA pellets were air-dried and re-dissolved in 30-40 µl of 1X TE buffer for further analysis [32].

### 3.2.2. PCR amplification:

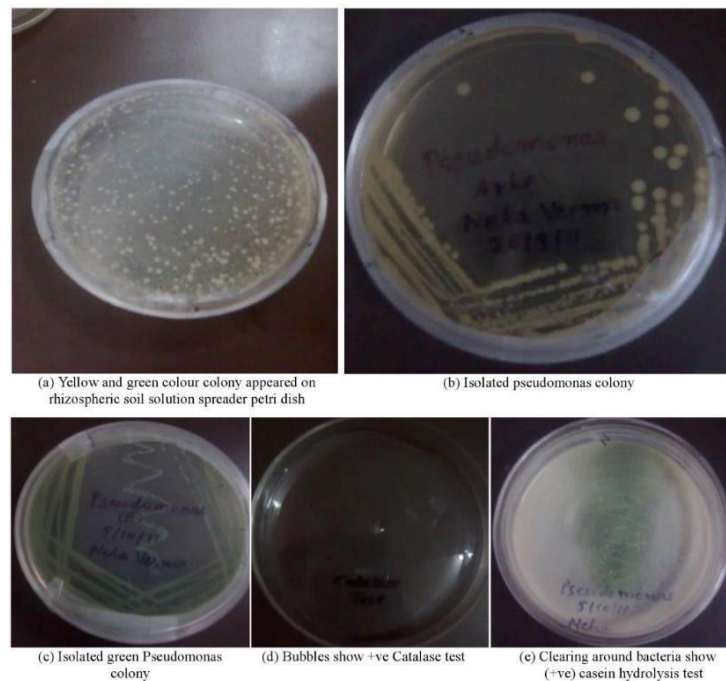
PCR is a technique that allows the exponential amplification of a specific DNA fragment in vitro using primers, nucleotides, and a thermostable DNA polymerase. The primers are short synthetic oligonucleotides that anneal to the complementary sequences flanking the target region on the template DNA. In this study, we used PCR to amplify a ~1500 bp fragment of the 16S rRNA gene, which is a highly conserved gene that encodes a component of the bacterial ribosome. The 16S rRNA gene comprises both variable and conserved regions that are useful for phylogenetic analysis and identification of bacteria at different taxonomic levels [33]. We used the universal primers 27F (5'-AGAGTTTGATCMTGGCTCAG-3') and 1492R (5'-TACGGYTACCTTGTACGACTT-3'), that direct the conserved regions at the ends of the gene. The PCR reaction mixture consisted of 2 µl of target DNA (~50 ng), 0.6 µl primers (10 pmol/µl), 0.6 µl of Taq DNA polymerase (5 U/µl), 0.5 µl of dNTPs (10 mM each), 2 µl of 10X PCR buffer with MgCl<sub>2</sub>. PCR buffer consists of Tris-HCl (200 mM pH 8.4), KCl (500 mM), and MgCl<sub>2</sub> (15 mM), and 15 µl of nuclease-free water, for a total volume of 20 µl. We placed tube containing all reaction in PCR machine by applying the programs [33,34].

### 3.2.3. Agarose gel electrophoresis:

Agarose gel electrophoresis is a technique that resolves DNA molecules according to their size and charge. Agarose is a seaweed-derived polysaccharide that forms a gel matrix upon dissolution in a buffer and cooling. The gel has pores that allow the movement of DNA molecules under the influence of an electric field. The phosphate backbone confers a negative charge to the DNA molecules, which migrate toward the anode during electrophoresis [35]. The smaller DNA molecules move faster and farther than the larger ones, resulting in a size-based separation. We visualized the DNA molecules by staining the gel with ethidium bromide (EtBr), a fluorescent intercalating agent that emits orange light upon UV irradiation [36]. A molecular weight marker, which is a mixture of DNA fragments of known sizes, is run alongside the samples to estimate the size of the PCR products. We used agarose gel electrophoresis to verify the quality and quantity of the genomic DNA and the PCR products. We prepared an 0.8% agarose gel for 100 ml in 1X TAE buffer which consists of 1 mM EDTA, 40 mM Tris-acetate, and pH 8.0. We placed the gel in an electrophoresis tank and filled this tank with 1X TAE buffer. We mixed 5 µl of genomic DNA with 1 µl of 6X loading dye (0.25% xylene cyanol, 30% glycerol, 0.25% bromophenol

blue) and load up into the wells. We also loaded 5 µl of 1 kb DNA ladder (a molecular weight marker) into a separate well. We performed electrophoresis at 100 V for about an hour or until the dye front reached the end of the gel. We visualized and photographed the gel under UV light using a gel documentation system [35–37].

## 4. Result:



**Figure 1:** Petri dish results of various assays (a) Rhizospheric soil spreading (b and c) Pseudomonas colony isolation (d) Catalase activity (e) Casein hydrolysis

We obtained pure bacterial colonies by serial dilution and plating of the soil samples on nutrient agar. The colonies were then streaked on King's medium B agar plates, which is a selective medium for Pseudomonas species. Pseudomonas species produce pigments that give the colonies a yellow or green color on King's medium B agar plates. The colonies that did not show any pigmentation were selected for further biochemical tests. The biochemical tests performed on the selected colonies included catalase test, gelatin hydrolysis test, indole production test, MR-VP test, citrate utilization test, and casein hydrolysis test. The catalase test detects the catalase enzyme, which catalyzes the decomposition of H<sub>2</sub>O<sub>2</sub> into H<sub>2</sub>O and O<sub>2</sub>. Oxygen bubbles form when H<sub>2</sub>O<sub>2</sub> is added to a positive catalase culture. The gelatin hydrolysis test assesses the ability of bacteria to produce gelatinase enzyme, which hydrolyzes gelatin into amino acids. A positive gelatin hydrolysis test is indicated by the liquefaction of the gelatin medium after refrigeration. The indole production test assesses the bacterial ability to produce indole from tryptophan by tryptophanase. A positive indole production test is indicated by a red color in the reagent layer when Kovac's reagent is added to the bacterial culture. The MR-VP test distinguishes bacteria based on

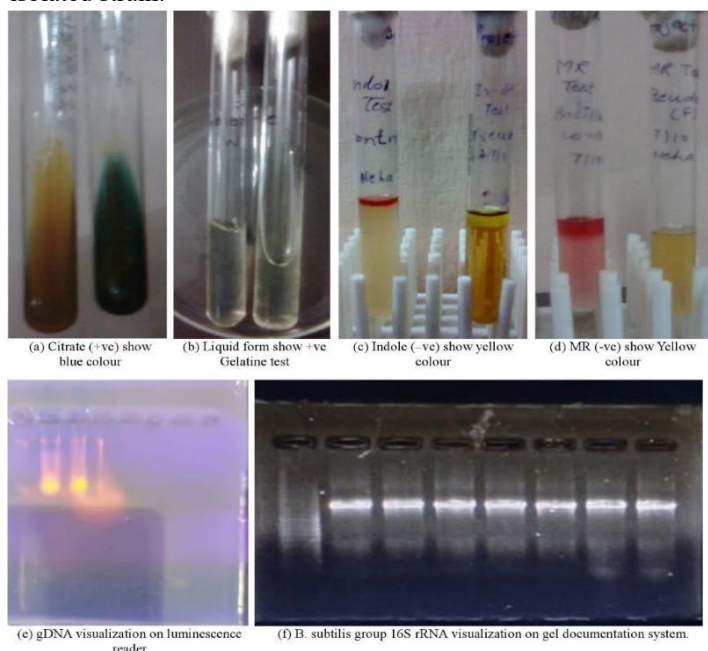


their glucose fermentation products. The MR test detects mixed acids, which acidify the medium, while the VP test detects acetoin, a 2,3-butanediol precursor. After adding methyl red in a red broth give a positive MR test, while after adding a VP reagent (A and B) in a red or pink broth gave a positive VP test. A positive citrate utilization test is indicated by growth on Simmons' citrate agar slants and a blue color change of the medium due to alkaline pH. The casein hydrolysis test evaluates the ability of bacteria to produce caseinase enzyme, which hydrolyzes casein, the main protein in milk. A positive casein hydrolysis test is indicated by a clear zone around the bacterial growth on skim milk agar plates.

**Table 2:** Summary of biochemical tests.

Biochemical Test	Result
Methyl red test	Negative
Vogesproskauer test	Negative
Catalase test	Positive
Gelatinee hydrolysis test	Positive
Casein hydrolysis test	Positive
Citrate utilization test	Positive
Indole test	Negative

The molecular tests confirmed the identity of the isolated strain as *B. subtilis* based on the 16S rRNA gene sequence. The primers ((Bsub5F and Bsub3R) targeting a 595-bp DNA fragment, are used in this study were specific for the 'Bacillus subtilis group', which includes closely related species such as *B. licheniformis*, *B. amyloliquefaciens*, *B. pumilus*, and *B. atrophaeus*. These species share high similarity in their 16S rRNA gene sequences and are difficult to distinguish by conventional methods. Therefore, PCR and sequencing were necessary to verify the specificity of the isolated strain.



**Figure 2:** Assays for different biochemical and molecular

characteristics (a) Citrate utilization (b) Gelatine hydrolysis (c) Indole production (d) Methyl red and Voges-Proskauer reactions (e) Genomic DNA detection on luminescence reader (f) *B. subtilis* group 16S rRNA detection on gel documentation system

## 5. Discussion:

The present study aimed to isolate and characterize a novel protease-producing *Bacillus subtilis* strain from soil samples collected at Kanpur University Campus, India. Among the 142 bacterial isolates screened for protease activity on skim milk agar plates, the isolate GS-P40 exhibited the highest protease activity and was selected for further analysis. Morphological and biochemical tests confirmed the identity of GS-P40 as *Bacillus subtilis*, a well-known producer of extracellular proteases [38,39]. The optimal conditions for protease production and activity by GS-P40 were determined to be pH 7.4, 60°C, and a fermentation time of 48 hours. The crude protease concentration and specific activity were estimated to be 0.14  $\mu$ M and 0.0233 U/ml, respectively, using a tyrosine standard curve. The crude protease also showed the ability to enhance the washing performance of a commercial detergent, indicating its potential application in the detergent industry. Proteases are widely used in various industrial sectors, such as leather, food, and pharmaceutical industries, due to their catalytic properties and biodegradability [40]. Alkaline proteases, in particular, have high demand in the detergent industry, as they can function under alkaline conditions and remove proteinaceous stains effectively [41,42]. The novel protease-producing *B. subtilis* strain isolated in this study has significance for the production of alkaline proteases, as it can grow and secrete proteases under alkaline conditions. Moreover, *B. subtilis* is an advantageous source of proteases, as it has a fast growth rate, low cultivation space requirements, and genetic manipulability, enabling the production of customized enzymes for specific purposes [43,44]. To determine the exact taxonomic position of the isolated *B. subtilis* strain, 16S rDNA sequence analysis was performed using PCR primers Bsub5F and Bsub3R, which target a 595-bp DNA fragment of the 'B. subtilis group' 16S rRNA. The results showed high specificity for *B. subtilis* and its closely related species within the 'Bacillus subtilis group', such as *B. licheniformis*, *B. amyloliquefaciens*, *B. pumilus*, and *B. atrophaeus* [38,39,42,45]. These species are known to produce various types of proteases with different properties and applications, highlighting the potential relevance of the isolated strain for industrial enzyme production. However, the direct detection of *B. subtilis* from wastewater was difficult, possibly due to competition from partially matching 16S rRNA molecules or low abundance of the target strain in the environmental samples. The similar results are also reported by other studies on protease production by *B. subtilis* [1,46]. This limitation suggests the need for further optimization of detection methods and purification techniques to enable the reliable detection of *B. subtilis* in diverse environmental samples. The study provides valuable insights into the isolation, characterization, and potential industrial applications of a novel protease-producing *B. subtilis* strain. The favorable enzymatic properties of the crude protease, such as activity and stability under specific conditions, indicate the

strain's suitability for future biotechnological endeavors, including enzyme production for industrial purposes.

## 6. Conclusion:

In conclusion, this study observed that protease production by the isolated *B. subtilis* strain was influenced by several factors, such as pH, temperature, and fermentation time. The optimal conditions for protease production were pH 7.4, temperature 60°C, and fermentation time 48 h, which resulted in a crude protease concentration of 0.14 µM with a specific activity of 0.0233 U/ml. PCR and 16S rRNA sequencing verified the specificity of the isolated strain within the '*Bacillus subtilis* group.' The protease produced by the isolated *B. subtilis* strain was alkaline and thermotolerant, which are desirable characteristics for industrial applications. The crude protease improved the washing performance of a commercial detergent, suggesting its biotechnological potential as an alkaline protease source for industrial applications.

## Abbreviation:

DW	- Distilled water
RT	- Room Temperature
M	- Molar Solution
N	- Normal Solution
SDS	- Sodium dodecyl Sulfate
EDT	- Ethylene Diamine Tetra Acetate
A	
CBB	- Commassie Brilliant Blue
BPB	- Bromophenol Blue
TAE	- Tri's acetate EDTA
NA	- Nutrient agar
LB	- Luria Broth
TE	- Tris EDTA
EtBr	- Ethidium Bromide
UV	- Ultra violet
OD	- Optical Density
PCR	- Polymerase chain reaction
RP	- Rotation per minute
M	
Psi	- Pound per square inch
dNT	- Deoxy nucleotide triphosphate
Ps	

## Declaration(s)

**Competing interests:** The authors report no conflicts of interest.

Author 1 declared no conflict of interest.

Author 2 declared no conflict of interest.

Author 3 declared no conflict of interest.

**Funding:** This research was unfunded by any public, commercial, or not-for-profit agencies.

**Ethical Approval and Consent to Participate:** Not applicable.

**Guarantor:** The article's full responsibility lies with PY, who is the corresponding author and the third author in the list.

**Authors' contributions:** PY and HD were responsible for manuscript conceptualization, writing - original draft, ethical approvals, consent, and sample collection. VC participated in writing - review & editing.

**Acknowledgements:** The authors thank the Institute of Biosciences and Biotechnology, Chhatrapati Shahu Ji Maharaj University, Kanpur - 208024, India for providing the laboratory facilities.

**Availability of data and materials:** Data and materials are available upon request.

**Consent for publication:** All authors consented to manuscript publication

## References:

1. B. OS, A. OO, Egwim, C. E. Production of Protease and Amylase from *Bacillus subtilis* and *Aspergillus niger* Using *Parkia biglobosa* (Africa Locust Beans) as Substrate in Solid State Fermentation. *Advances in Life Sciences* 2011;1:49–53.
2. Kannan MN, Badoni A, Chamoli V, Chandra Bahuguna N, Sethi S. *Advances in Agriculture and Natural Sciences for Sustainable Agriculture* (October 12 & 13, 2018) Isolation and characterization of bacterial isolates from agriculture field soil of Roorkee region. ~ 108 ~ *Journal of Pharmacognosy and Phytochemistry* 2018;5:108–10.
3. Su Y, Liu C, Fang H, Zhang D. *Bacillus subtilis*: a universal cell factory for industry, agriculture, biomaterials and medicine. *Microbial Cell Factories* 2020 19:1 2020;19:1–12.
4. Karava M, Bracharz F, Kabisch J. Quantification and isolation of *Bacillus subtilis* spores using cell sorting and automated gating. *PLoS One* 2019;14:e0219892.
5. Zhang Y, Hu J, Zhang Q, Cai D, Chen S, Wang Y. Enhancement of alkaline protease production in recombinant *Bacillus licheniformis* by response surface methodology. *Bioresour Bioprocess* 2023;10:1–11.
6. Karthikeyan A, Joseph A, Nair BG. Promising bioactive compounds from the marine environment and their potential effects on various diseases. *Journal of Genetic Engineering and Biotechnology* 2022 20:1 2022;20:1–38.
7. Perez RH, Zendo T, Sonomoto K. Novel bacteriocins from lactic acid bacteria (LAB): Various structures and applications. *Microb Cell Fact* 2014;13:1–13.
8. Wu R, Patocka J, Nepovimova E, Oleksak P, Valis M, Wu W, et al. Marine Invertebrate Peptides: Antimicrobial Peptides. *Front Microbiol* 2021;12:785085.
9. Imade EE, Omonigho SE, Babalola OO, Enagbonma BJ. Lactic acid bacterial bacteriocins and their bioactive properties against food-associated antibiotic-resistant bacteria. *Ann Microbiol* 2021;71:1–14.
10. Zhang T, Zhang Y, Li L, Jiang X, Chen Z, Zhao F, et al.

- Biosynthesis and Production of Class II Bacteriocins of Food-Associated Lactic Acid Bacteria. *Fermentation* 2022;8:217..
11. Angelescu IR, Grosu-Tudor SS, Cojoc LR, Maria GM, Chiritoiu GN, Munteanu CVA, et al. Isolation, characterization, and mode of action of a class III bacteriocin produced by *Lactobacillus helveticus* 34.9. *World J Microbiol Biotechnol* 2022;38:1–13.
  12. Hegemann JD, Süssmuth RD. Matters of class: coming of age of class III and IV lanthipeptides. *RSC Chem Biol* 2020;1:110–27.
  13. Soltani S, Hammami R, Cotter PD, Rebuffat S, Said L Ben, Gaudreau H, et al. Bacteriocins as a new generation of antimicrobials: toxicity aspects and regulations. *FEMS Microbiol Rev* 2021;45:1–24.
  14. Mercado V, Olmos J. Bacteriocin Production by *Bacillus* Species: Isolation, Characterization, and Application. *Probiotics and Antimicrobial Proteins* 2022 14:6 2022;14:1151–69.
  15. Lim ES. Influence of bacteriocin-producing *Bacillus* strains on quality characteristics of fermented soybean product with biogenic amine-forming lactic acid bacteria. *Appl Biol Chem* 2022;65:1–14
  16. Hammami I, Jaouadi B, Bacha A Ben, Rebai A, Bejar S, Nesme X, et al. *Bacillus subtilis* bacteriocin Bac 14B with a broad inhibitory spectrum: Purification, amino acid sequence analysis, and physicochemical characterization. *Biotechnology and Bioprocess Engineering* 2012;17:41–9.
  17. Chauhan A, Jindal T. Biochemical and Molecular Methods for Bacterial Identification. *Microbiological Methods for Environment, Food and Pharmaceutical Analysis* 2020:425–68
  18. Pandey GR, Shrestha A, Karki TB, Neupane S, Ojha S, Koirala P, et al. Screening and Identification of Thermotolerant and Osmotolerant *Bacillus amyloliquefaciens* BKHE Isolated from Kinema of Eastern Nepal for Alkaline Protease Production. *Int J Microbiol* 2022;2022.
  19. Ciurko D, Łaba W, Żarowska B, Janek T. Enzymatic hydrolysis using bacterial cultures as a novel method for obtaining antioxidant peptides from brewers' spent grain. *RSC Adv* 2021;11:4688–700
  20. Jamaludin S La, Rehena JF, Seumahu CA, Rumahlatu D. Isolation and Identification of Protease Enzyme Producing Bacteria from Fermentation of Gonad Sea Urchin (*Echinothrix calamaris*). *Ilmu Kelaut* 2019;23:187–98.
  21. Thairu Y, Nasir IA, Usman Y. Laboratory perspective of gram staining and its significance in investigations of infectious diseases. *Sub-Saharan African Journal of Medicine* 2014;1:168.
  22. Becerra SC, Roy DC, Sanchez CJ, Christy RJ, Burmeister DM. An optimized staining technique for the detection of Gram positive and Gram negative bacteria within tissue. *BMC Res Notes* 2016;9:1–10.
  23. Hadwan MH. Simple spectrophotometric assay for measuring catalase activity in biological tissues. *BMC Biochem* 2018;19:1–8.
  24. Kadhum MA, Hadwan MH. A precise and simple method for measuring catalase activity in biological samples. *Chemical Papers* 2021;75:1669–78.
  25. <https://doi.org/10.11648/J.IJMB.20220703.14>.
  26. Dela Cruz TEE, Martin J, Torres O. Gelatin Hydrolysis Test Protocol 2016.
  27. *Clinical Microbiology Procedures Handbook*. Clinical Microbiology Procedures Handbook 2016
  28. Jain A, Jain R, Jain S. To Perform Biochemical Identification of Microorganism: IMViC (Oxidative Fermentation and Carbohydrate Source Utilization) 2020:141–3.
  29. Ali S, Semwal B, Singh K, Sharma B, Sati BK. ISOLATION AND CHARACTERIZATION OF PSEUDOMONAS FLUORESCENS STRAINS FROM THE DIFFERENT REGIONS OF CHAKRATA, JAUNSAAR-BAWAR, UTTARAKHAND. *International Journal of Creative Research Thoughts* 2020;8:2320–882.
  30. Malviya MK, Pandey A, Sharma A, Tiwari SC. Characterization and identification of actinomycetes isolated from “fired plots” under shifting cultivation in northeast Himalaya, India. *Ann Microbiol* 2013;63:561–9.
  31. Sirisha A, Lakshmi J, Lakshmi K, Gopal AV. Isolation and Biochemical Characterization of Lactic Acid Bacteria from Fermented Foods. *IntJCurrMicrobiolAppSci* 2021;10:584–600.
  32. Kim E, Yang SM, Lim B, Park SH, Rackerby B, Kim HY. Design of PCR assays to specifically detect and identify 37 *Lactobacillus* species in a single 96 well plate. *BMC Microbiol* 2020;20:1–14.
  33. Poretsky R, Rodriguez-R LM, Luo C, Tsementzi D, Konstantinidis KT. Strengths and Limitations of 16S rRNA Gene Amplicon Sequencing in Revealing Temporal Microbial Community Dynamics. *PLoS One* 2014;9:e93827.
  34. Callahan BJ, Wong J, Heiner C, Oh S, Theriot CM, Gulati AS, et al. High-throughput amplicon sequencing of the full-length 16S rRNA gene with single-nucleotide resolution. *Nucleic Acids Res* 2019;47:e103–e103..
  35. Djankpa FT, Wiafe GA, Boateng BN, Tsegah KM, Essien-Baidoo S, Ulanja MB, et al. Assessment of corn starch as substitute for agarose in DNA gel electrophoresis. *BMC Res Notes* 2021;14:1–6.
  36. Li J, Yang Y, Mao Z, Huang W, Qiu T, Wu Q. Enhanced Resolution of DNA Separation Using Agarose Gel Electrophoresis Doped with Graphene Oxide. *Nanoscale Res Lett* 2016;11:1–6.
  37. Bogiel T, Mikucka A, Kanarek P. Agarose Gel Electrophoresis-Based RAPD-PCR—An Optimization of the Conditions to Rapidly Detect Similarity of the Alert Pathogens for the Purpose of Epidemiological Studies. *Gels* 2022;8:760.
  38. Hashmi S, Iqbal S, Ahmed I, Janjua HA. Production, Optimization, and Partial Purification of Alkali-Thermotolerant Proteases from Newly Isolated *Bacillus subtilis* S1 and *Bacillus amyloliquefaciens* KSM12. *Processes* 2022, Vol 10, Page 1050 2022;10:1050..
  39. Masi C, Gemechu G, Tafesse M. Isolation, screening, characterization, and identification of alkaline protease-producing bacteria from leather industry effluent. *Ann*

- Microbiol 2021;71.
40. Joo HS, Kumar CG, Park GC, Paik SR, Chang CS. Oxidant and SDS-stable alkaline protease from *Bacillus clausii* I-52: Production and some properties. *J Appl Microbiol* 2003;95:267–72.
  41. Chang C, Gong S, Liu Z, Yan Q, Jiang Z. High level expression and biochemical characterization of an alkaline serine protease from *Geobacillus stearothermophilus* to prepare antihypertensive whey protein hydrolysate. *BMC Biotechnol* 2021;21:1–13.
  42. Suberu Y, Akande I, Samuel T, Lawal A, Olaniran A. Cloning, expression, purification and characterization of serine alkaline protease from *Bacillus subtilis* RD7. *Biocatal Agric Biotechnol* 2019;20:101264..
  43. Yang H, Qu J, Zou W, Shen W, Chen X. An overview and future prospects of recombinant protein production in *Bacillus subtilis*. *Applied Microbiology and Biotechnology* 2021 105:18 2021;105:6607–26.
  44. Altenbuchner J. Editing of the *Bacillus subtilis* genome by the CRISPR-Cas9 system. *Appl Environ Microbiol* 2016;82:5421–7..
  45. Chen H, Wu J, Huang X, Feng X, Ji H, Zhao L, et al. Overexpression of *Bacillus circulans* alkaline protease in *Bacillus subtilis* and its potential application for recovery of protein from soybean dregs. *Front Microbiol* 2022;13:968439.
  46. Arasu MV, Al-Dhabi NA. Improved production of extremophilic protease using low-cost substrate by *Bacillus subtilis* ZB isolated from extreme environment for tannery effluent treatment. *Biomass Convers Biorefin* 2023:1–11.